



RALLY SAFETY SYSTEM INSTALLATION MANUAL

Version released on 11.08.2020

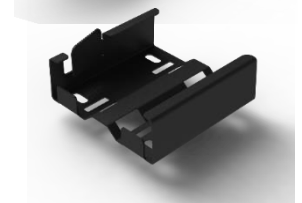
1. GENERAL

- 1.1. It is mandatory that each rally vehicle to have properly installed and working “RALLY SAFETY SYSTEM” on board of the racing vehicle.
- 1.2. The system is rented at the administrative check and it is installed and sealed by the organizer at the scrutineering.
- 1.3. A deposit published in the supplementary regulations must be paid in cash only at the administrative check. Deposits are refunded in cash at sight when the equipment is returned to the organizer in working condition.
- 1.4. The tracking devices will be dismantled by the organizer in the last Parc Ferme or Time control. If a crew retires the rally, they can dismantle the Rally Safety System without causing any damage to the hardware and return it to the HQ, where after checking of the condition of the devices and hardware, the deposit will be refunded.
- 1.5. Crews will receive special Base/Mounting brackets for the Com-Box unit, that must be installed according to this appendix on the rally vehicle before entering the scrutineering.

1.6. It is the competitor's responsibility to ensure that the Rally Safety System always remain permanently connected and switched on with the antenna connected throughout the duration of the rally. Any crew that fails to do so, or if it is noted that the system is not in operation through the fault of the crew, will be reported to the Clerk of the Course and will incur a penalty of at least 15 minutes, which may be increased at the discretion of the Stewards.

2. SYSTEM COMPONENTS

- 2.1. GPS Tracker – 75 x 75 x 30 mm. Installed by the organizer at scrutineering on the required position. The device is IP 67 protected and have built in battery providing back up power if the external power is lost. See bellow possible installation locations and positions.
- 2.2. Com-Box – 75 x 75 x 30 mm. Installed by the organizer at scrutineering on the required position. The device is IP 67 protected and have built in battery providing back up power if the external power is lost. See bellow possible installation locations and positions.
- 2.3. Buzzer/Alarm – 55 x 55 x 70 mm. Installed by the organizer at scrutineering on the required position. See bellow possible installation locations and positions.
- 2.4. Base/Mount bracket for Com-box – 75 x 75 x 25 mm. Given at the administrative check, Installed by Crew on the required position before entering scrutineering. See bellow possible installation locations and positions.
- 2.5. RF extension and antenna installed on the buzzer/alarm or Com-box

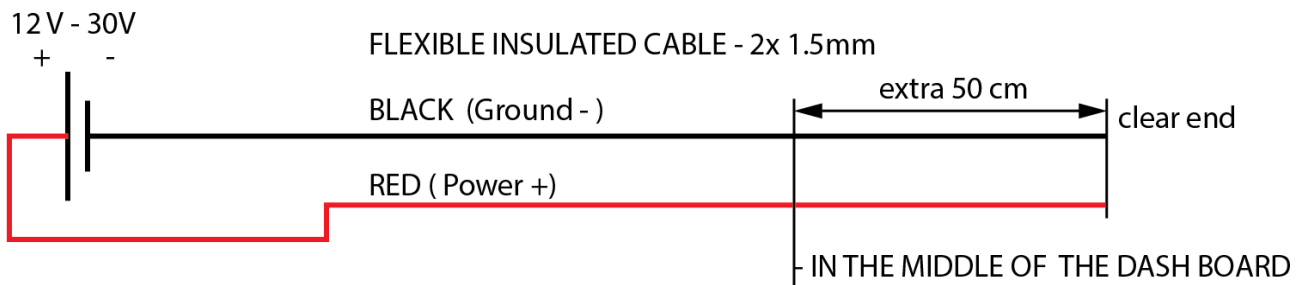


- 2.6. It is forbidden to unseal, disassemble, and remove the external power supply for the devices. Checks will be carried out during the event.

3. POWER SUPPLY

- 3.1. **IMPORTANT !!!** The battery master cut-off (kill) switch **MUST NOT DISCONNECT** the power supply for the Rally Safety System.
- 3.2. It is the responsibility of the competitors alone to provide, **DIRECT POWER SUPPLY** from the vehicle's battery according to the drawings provided.
- 3.3. The power cables must be "flexible" (multi wire), insulated cables – 2 x min 0.5 to 1.25 mm² (preferably with **RED** and **BLACK** insulation color).
- 3.4. The connection may have an **IN-LINE FUSE** - "BLADE TYPE" of 5A.

VEHICLE'S BATTERY



- 3.5. The wires must be prepared in advance and connected to the vehicle's battery when the vehicle is presented for scrutineering.
- 3.6. The cable must have minimum 50cm extra usable length from the middle of the dash board (See installation position).
- 3.7. The connection to the Rally Safety System will be done with a simple connector terminals supplied by the organizer.

3.8. Electrical details:

- The allowed range of voltage is 6V to 30V DC.
- The nominal voltage is 12V.
- Energy consumption in idle state (at 12.6V power supply): 250mA r.m.s.
- Maximal power consumption – 2W

4. CONNECTORS

- 4.1. The power supply cables (Power+ and Ground-) must be equipped with **FULLY INSULATED FEMALE Crimp Spade Terminal Connector - 6.3 x 0.8mm**.

4.2. See the graphic bellow for example:



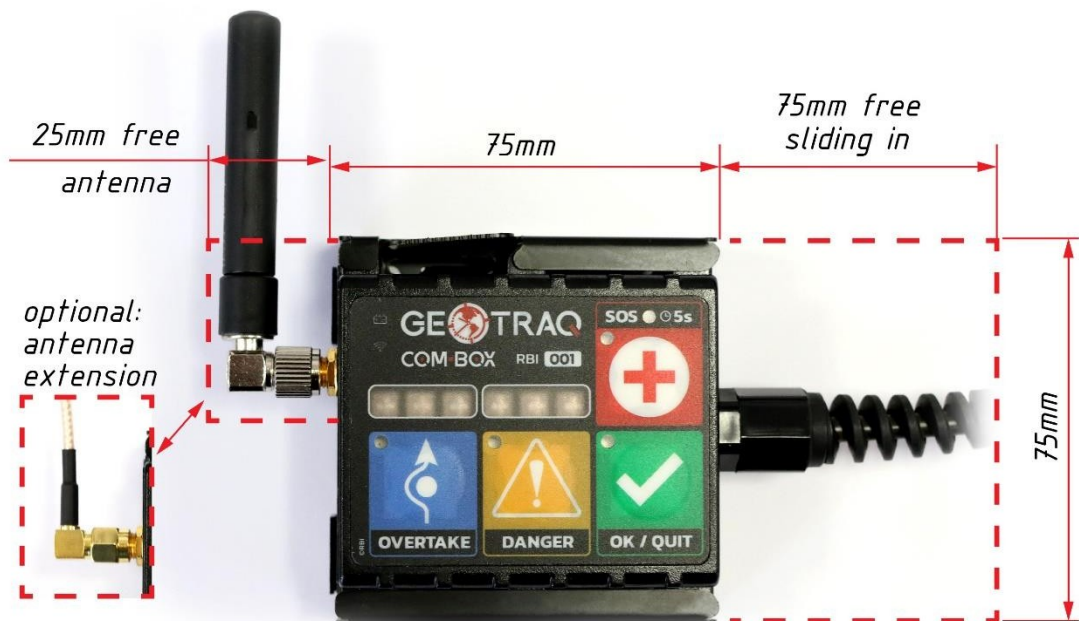
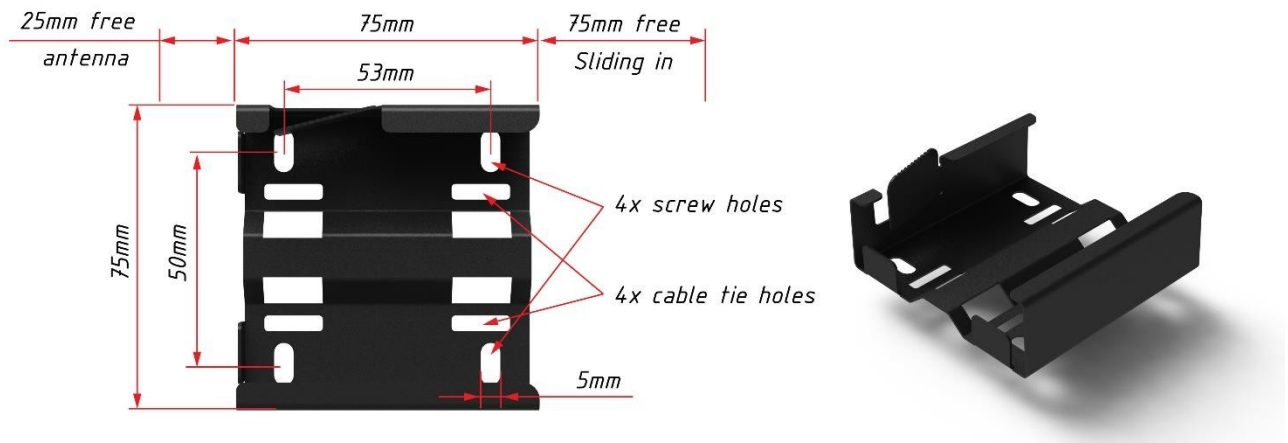
5. MOUNTING OF THE SYSTEM COMPONENTS:

- 5.1. It is the competitor's responsibility to ensure that there is enough free space for each of the system components to be installed.

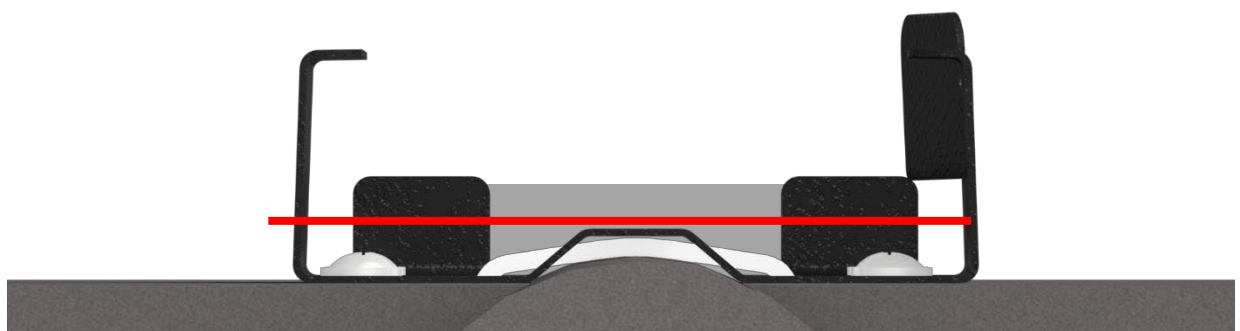
- 5.2. The system components will be installed by the organizer at the scrutineering.
- 5.3. The mounting of the components is specific of each vehicle type using the following (supplied by the organizer): Cable/zip ties , 3M Velcro tape, Electrical connectors

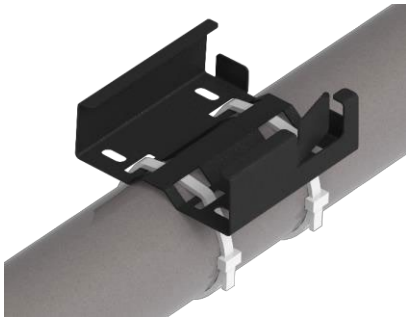
6. COM-BOX INSTALLATION

- 6.1. Base/Mount bracket will be distributed at the administrative check to each crew and must be installed on the rally vehicle before scrutineering.
- 6.2. Base/Mount bracket can be directly bolted or zip-tied or stuck to the rally vehicle at the designated location by the crew. It is the responsibility of the crew alone to install the bracket before scrutineering.
- 6.3. A minimum of 75mm on the sliding side of the bracket and 25mm on the antenna side must be free for the Com-Box unit.
- 6.4. The installation location must be in reach of the Rider or Co-driver for operation in the rally.

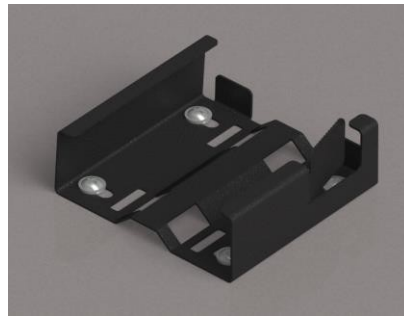


6.5. No bolt/screw heads or cable/zip ties can protrude over the red line as marked bellow.





Cable / zip tie fixture

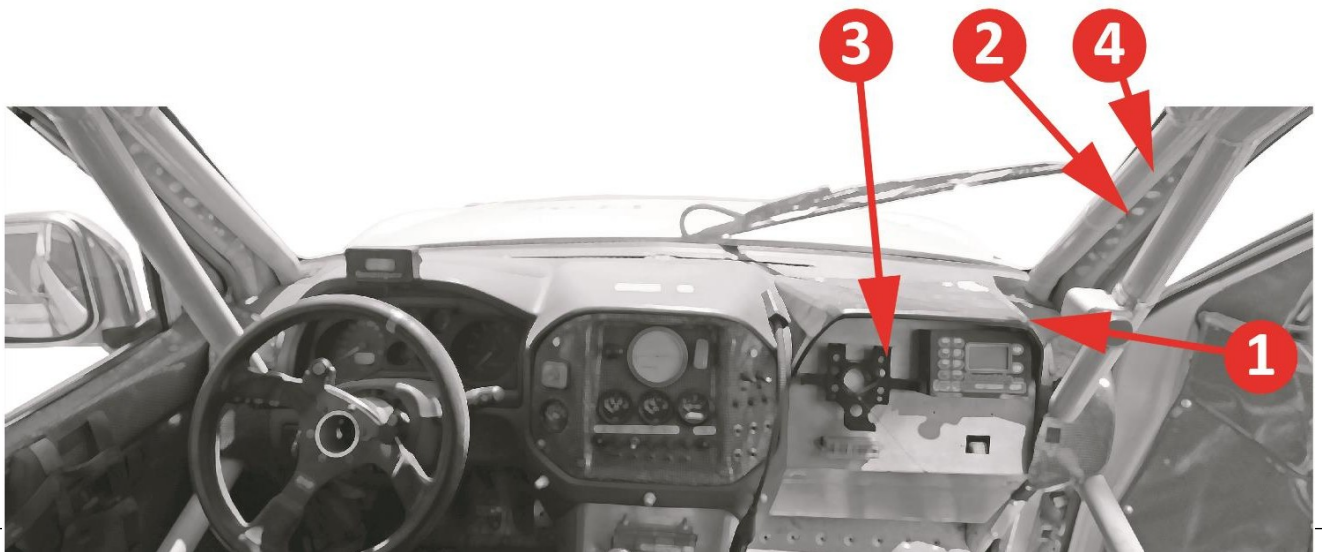


Screw / bolt fixture



Com-Box unit installed in bracket

7. INSTALLATION POSITION: CARS



#	Location	Fixing
1 – Power supply cable end	Middle of the cockpit or co-driver „A-pillar“	Zip ties
2 – GPS Tracker	„A-pillar“ or dashboard or horizontal roll-bar tube	Zip ties or velcro tape
3 – Com Box	dashboard	Base/mount bracket
4 – Buzzer / Alarm	„A-pillar“ or dashboard or horizontal roll-bar tube	Zip ties



8. SYSTEM FUNCTIONS

8.1. Tracking and safety functions:

- GSM/GPRS Tracking
- Manual and automatic stop vehicle alert to Rally control
- SOS/OK safety alerts to Rally Control
- Two-way communication to Rally Control.
- Live tracking data platform for public access
- Rally replay




8.2. Control functions

- Validation of waypoints
- Validation of virtual passage controls
- Speed control by start and end of speed control zones



8.3. Vehicle-to-Vehicle Communication functions

- Overtake request by vehicle-to-vehicle communication
- Vehicle in danger
- Vehicle in SOS

BATTERY STATUS

-  - EXTERNAL POWER
-  - NO EXTERNAL POWER
-  - (BLINKING) INT. BATTERY EMPTY

RADIO STATUS

-  - RADIO OK
-  - SLEEP MODE, NO RADIO

OVERTAKE FUNCTION

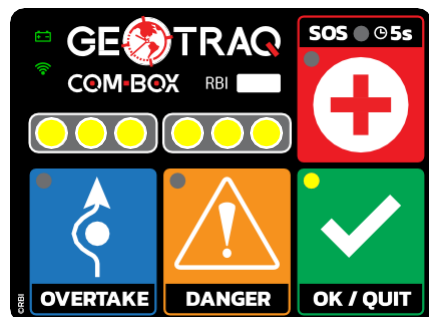
DANGER BEACON



EMERGENCY SOS BEACON

- PRESS AND HOLD UNTIL ACTIVATED

CONFIRM / QUIT BUTTON



Vehicle A wants to overtake:
press for 2 seconds the **BLUE BUTTON**
to send a signal to the vehicle ahead
(less than 200m).



Signal is received when lights are **SOLID YELLOW**.
Signal is not received if light **BLINK YELLOW**.
Cancel/repeat the function with **OK/QUIT** button.



Vehicle B is being overtaken:
Lights BLINK BLUE



CONFIRM OVERTAKING WITH **BLUE BUTTON** !
(will allow overtaking at the first safe place)

DECLINE OVERTAKING WITH **OK/QUIT BUTTON**



Vehicle A receives confirmation for overtaking:
Lights ARE SOLID GREEN, vehicle B will allow
overtaking at the first safe place.

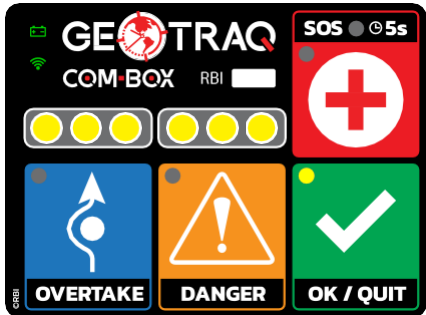
CONFIRM WITH **OK/QUIT BUTTON** (optional)



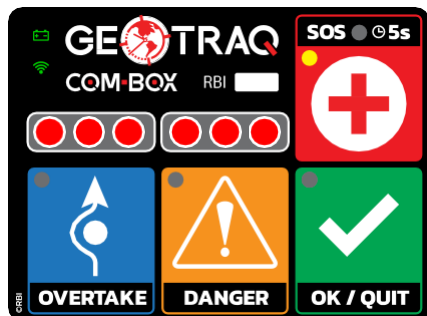
If you breakdown in a danger place (after bling turn) or if drive against the route, activate **“DANGER BEACON FUNCTION”**.

You will be sending signal to the competitors maximum 200 meters around you to inform them. DEACTIVATE WITH **“OK/QUIT” BUTTON**



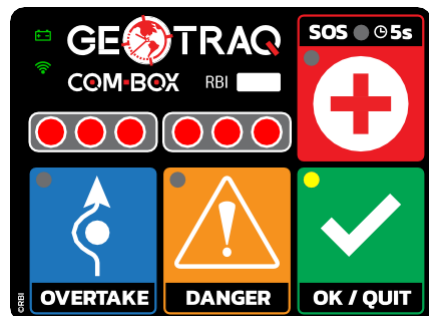


If you receive a signal from **“DANGER BEACON”**.
Lights will **BLINK YELLOW**. **ALARM IS ON**.
CONFIRM WITH **OK/QUIT BUTTON** AND REDUCE
SPEED TO TAKE EXTRA CAUTION.



If you **REQUIRE MEDICAL ASSISTANCE**,
PRESS AND HOLD SOS BUTTON TO
ACTIVATE FUNCTION.

You will be sending signal to the competitors
maximum 200 meters around you to inform them.
Also signal is transmitted directly to Rally Control.
DEACTIVATE WITH “OK/QUIT” BUTTON



If you receive a SOS signal from Lights will **BLINK RED. ALARM IS ON.** CONFIRM WITH **OK/QUIT BUTTON** AND BE READY TO ASIST AN ACCIDENT SCENE.



RALLY CONTROL can send you an “REQUEST” to ask for your status.

REPLY WITH THE 3 AVAILABLE OPTIONS:

- SOS - activates SOS FUNCTION
- DANGER - activates DANGE FUNCTION
- OK / QUIT

Doing this RALLY CONTROL will know your current status and will act accordingly.